

AMP[®]

FACTORY DIRECT LANDSCAPE LIGHTING
FOR PROFESSIONALS



PROFESSIONAL LANDSCAPE LIGHTING

Enhance your nighttime experience with landscape lighting. Open your eyes to the transformation; your home and property will come alive at night. You, your family, and your guests will be delighted with the results.

The first step is to recognize that lights can accomplish much more than just beautifying your property. They can provide safety, security, functionality, and benefit the environment.

Let's start by identifying the goals of landscape lighting. Then, you can begin planning how to achieve them.

Improve Security

Provide sufficient illumination in critical areas throughout your property to deter, detect, and identify intruders.

Ensure Safety

Prevent trips and falls by illuminating paths, pool areas, steps, docks, and other places with obstacles or changes in elevation.

Create a Masterpiece

Lighting can reveal beauty already present and create new beauty through the interplay between light and shadow. Selectively illuminate objects you love and cast shadows to make surfaces more interesting.

Lifestyle & Utility

Create a nighttime backyard oasis by illuminating decks and patios so you can socialize, cook, play sports, or other activities that you and your family enjoy.

Be Green with LED

With AMP® super-efficient LED lights, you can save energy and money while helping to preserve the environment.

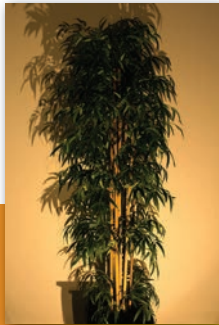


LIGHTING DESIGN TIPS

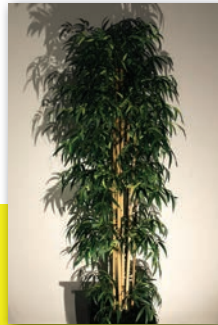
Illumination from lighting fixtures and lamps has qualities that affect how it appears and what it can accomplish. Here are two of the most important:

Color temperature refers to light's warmth or coolness. The subtle difference in these hues determines the overall mood.

Beam angle describes the width of the light beam. It is important to make sure you have ideal coverage of the illumination.



2200K



2700K



3000K



4000K

VERY WARM/WARM WHITE (2200K)

2200K is a very warm white. This color temperature closely resembles the color of sodium lamps used in some streetlights.

WARM/NEUTRAL WHITE (2700K-3000K)

Noticeably cooler (bluer) than 2200K. It tends to make foliage look less yellow, and is especially effective for lighting vegetation. 2700K is the most popular as it is warm and welcoming.

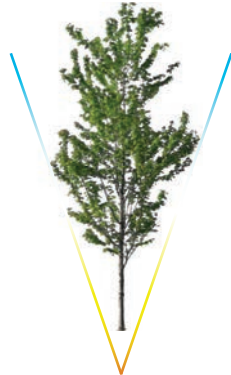
COOL WHITE (4000K)

Quite blue compared to 2700K - 3000K and seldom used for general landscape lighting. May be used selectively on blue plants, or when trying to simulate moonlighting (4200K) effects with downlighting. May also be preferred for commercial applications.



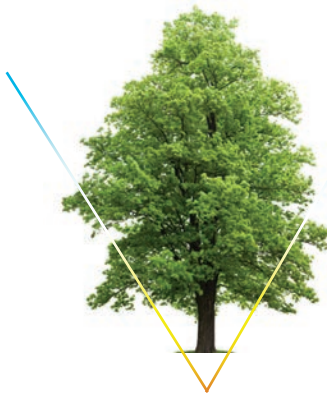
NARROW/SPOT 10-24° Beam Angle

Very narrow beam of light ideal for narrow trees, columns, and flag poles.



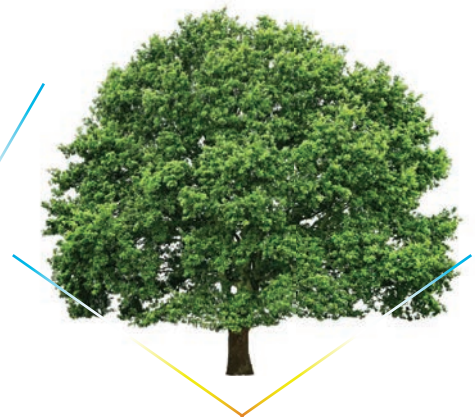
NARROW FLOOD 30-38° Beam Angle

Medium width for general accent lighting. Projects a distinct cone shape on walls.



WIDE FLOOD 60-80° Beam Angle

Wide beam provides more even coverage on walls with a less distinct conical shape.



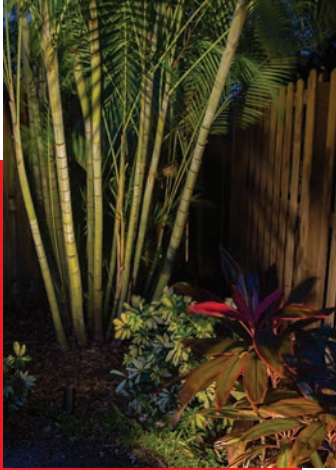
VERY WIDE FLOOD 80-120° Beam Angle

Very wide beam provides a large area of coverage. Best for very large trees or for even coverage over a wide wall.

SPOTLIGHTS

If landscape lighting is painting with light, then spotlights are the brushes. Every model is professional quality and delivers precise beams of light to satisfy the goals of any lighting design.

SPOTLIGHTING TECHNIQUES



Highlighting

Created by placing a spotlight at the base of an outdoor feature. Experiment with different designs by varying the distance and angle of the fixture.



Silhouetting

Place a spotlight behind the feature and aim towards an adjacent wall to create an illuminated backdrop.



Wall-Washing/Shadowing

Create a soft, even glow that comes off the wall or facade it's pointed toward.



Accenting

Angle a spotlight to point out an architectural feature, statuary, or plants. Use a narrow beam spotlight to add flair and mystery to your accent lighting.

SPOTLIGHTING TIPS

Spotlights are used for emphasis, calling attention to specific architectural or landscape features. Spotlights use a narrow beam, drawing focus to one object at a time. The intention of lighting your home is not to flood it with light, making it look over-lit. You should use spotlights selectively to apply creative, visual accents to your home.



AccentPro



EcoPro



AggregatePro



ONE G2 ControlPro 300



ONE G2 ControlPro 500



ONE G2 ControlPro 800

*Finishes (Brass & Copper)
AMP ONE Integrated, Constant Output Integrated,
and Lamp-Ready Models Available*

DOWNLIGHTS

Downlighting is a landscape lighting technique used to simulate moonlighting. This is accomplished through installing downlight fixtures in trees or high trellises or other structures.



ONE ControlPro 200 Downlight



*AerialistPro Hanging
Light with Shade*



*PinnaclePro
Downlight*



*AMP ONE Integrated, Constant Output Integrated,
and Lamp-Ready Models Available*

FLOOD LIGHTS

Flood lights are used to illuminate walls, signs, tree canopies, and similar applications requiring wide spread lighting. They can be used for wall washing and grazing techniques as well as provide safety and security for yards and other large, outdoor areas.



EquaPro



DispersePro



ParamountPro



SpectrumPro

*Constant Output Integrated, and
Lamp-Ready Models Available*

CLASSIC PATH LIGHTS

This series includes luminaire designs that stand the test of time. With simple, clean lines that complement most architecture, these fixtures look at home along residential paths and gardens.



1. Well Engineered and Constructed

Our fixture designers create path lights that are beautiful right out of the box and that maintain that beauty after years in the landscape. Our path lights are constructed of sturdy brass or copper.

2. Designed for Performance

Path lights have important functions, primarily safety, security, and beauty. To fulfill these functions, the lights must deliver the right amount (and quality) of illumination. Our path lights are tested in our innovation lab to make sure they deliver light with the correct properties, then are tested in the field for real world confirmation.



MagnumPro



ConicaPro



SummitPro

Finishes (Brass, Copper, & Black) | Sizes (24" Standard & 14" Mini)

DECORATIVE PATH LIGHTS

Decorative path and area lights are the perfect way to make any property stand out from the rest. Beautiful day and night, these fixtures are suitable for pathways, stairs, and landscape regions such as gardens, patios, and docks.



Silhouette



26" Helix Tower Bollard



OrchardPro

PATH LIGHT TIPS

- Larger hats and taller fixtures tend to have wider beam spreads
- Smaller hats look best along narrow paths
- Shorter fixtures can be used for any sized path or garden bed. Just be careful along walkways since they can be tripping hazards
- Taller fixtures are good in garden beds and short bushes



StetsonPro 9"



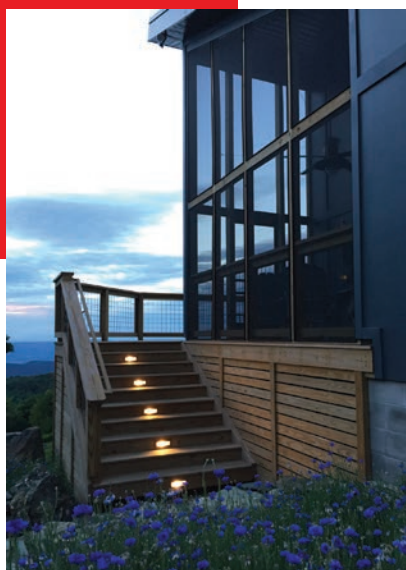
42" Radix Tower Bollard



NovellePro

DECK & STEP LIGHTS

These lights are compact and project light downward. These are perfect fixtures to mount on decks, railings, posts, docks, and steps. Made to withstand the elements and last for a lifetime.



DECK & STEP LIGHTING APPLICATIONS

1. Safety

Safety is the most important reason for deck and step lighting. Lighting on decks, docks, patios, and steps minimizes trip and fall hazards.

2. Enhance Your Outdoors

Using deck and step lighting around pool areas, outdoor kitchens, fireplaces, boat ramps, and more can lend itself to entertaining outdoors.

3. Visual Appeal

Lighting in common deck and step applications can add a dramatic effect to your home's nighttime landscape.



*Safe-Step Pro
LED Step Light*



*InfusePro
Step Light*



*Deck-Design Pro Rounded
Integrated or Lamp-Ready*



*Deck-Design Pro Louvered
Integrated or Lamp-Ready*



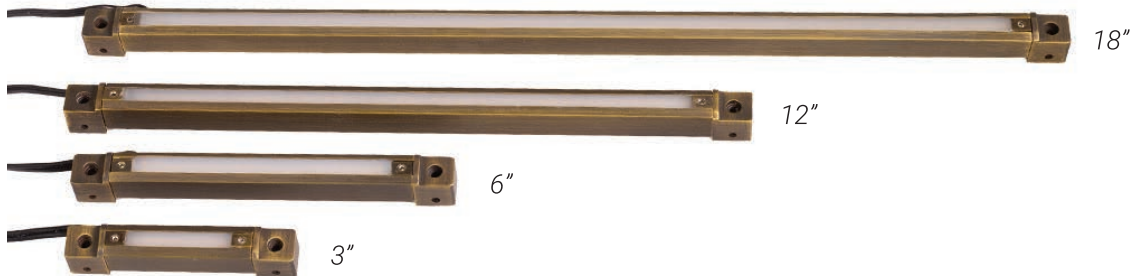
DecoPro

Finishes (Brass & White) | Integrated and Lamp-Ready Models Available

HARDSCAPE LIGHTS

Hardscape lights are low profile lighting, perfect for tight spaces. Flexible mounting options provide endless possibilities for mounting under benches, railings, overhangs, under hardscape capstones, and more.

Soft-Wash Pro Rotatable Hardscape



HARDSCAPE LIGHTING APPLICATIONS

1. Retaining Walls

Use hardscape lighting to help light the way near retaining walls.

2. Decks, Docks, Steps

Use hardscape lighting to prevent trips, falls, and other hazards.

3. Outdoor Kitchens

Enjoy your outdoor kitchen and entertainment area day or night.

4. Decorative Walls

Use hardscapes to bring life and interest to architectural spaces.



DescentPro



LateralPro



*TorrentPro
(Rotatable)*

Integrated and Lamp-Ready Models Available

www.amplighting.com | (813) 978-3900

WELL & IN-GRADE LIGHTS

Used for in-ground lawn applications and for uplighting trees, columns, and architectural features when above-ground fixtures are not desired.



WELL LIGHTING DESIGN TIPS

Use well lights for below-ground applications.

1. Lawns

Use well lights when fixture location must be in your lawn. Since these fixtures are level with the ground's surface, they will be safe from lawn mowers and other damaging lawn equipment.

2. Decks, Docks, Patios, and Pathways

Well lights are great for these applications because again, they are level with the ground's surface. This allows them to integrate with "hard" surfaces. Our high-quality products will stand up to foot and vehicle traffic in these areas as well.

3. Columns

Well lights are great for lighting columns because their light source is low to the ground. This means that you may light columns or other features from the ground up with no dark spots at the base of the feature.



*ONE HydraPro™
LED Well Light*



*HydraPro™
MR16 Well Light*



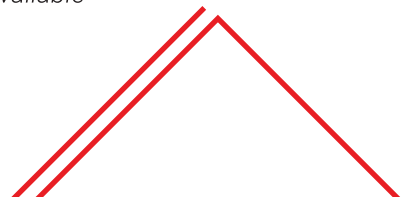
*ONE HydraPro™
LED In-Grade Well Light
(Optional Glare Guards)*



*HydraPro™ MR16
In-Grade Well Light
(Optional Glare Guards)*

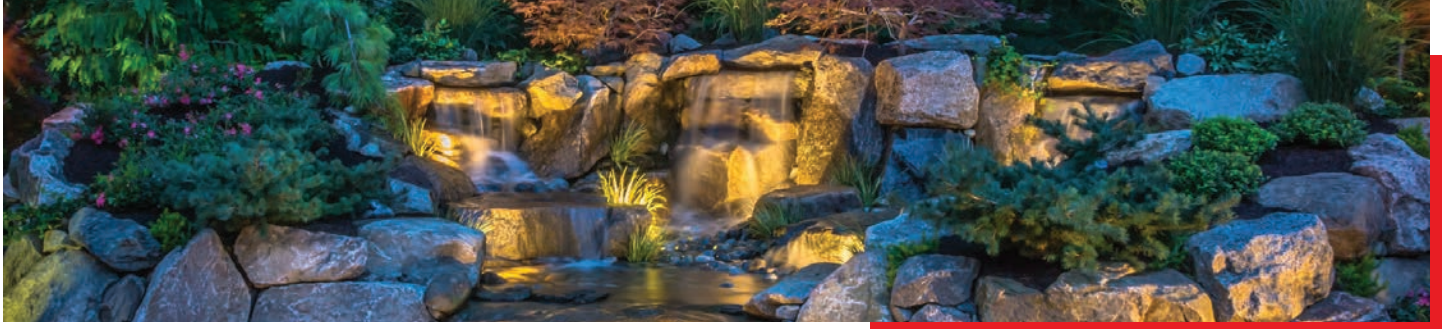
AMP ONE Integrated, Constant Output Integrated, and Lamp-Ready Models Available

www.amplighting.com | (813) 978-3900



UNDERWATER LIGHTS

Underwater lights add glowing accents to fountains, ponds, and other water features. They can also be used to illuminate waterfalls and surrounding rocks and plant materials.



USE UNDERWATER FIXTURES FOR:

1. Atmosphere Enhancement

Enhance the atmosphere of your nighttime waterscapes. Add depth and drama to these features to bring life to your pond, fountain, or waterfall features at night.

2. Safety

Improve the safety of your property by adding underwater lighting to add visibility to ponds, decks, docks, and boat landings to prevent trips and falls.



*HydraPro™ Integrated
LED Underwater Light
(Optional Glare Guards)*



*HydraPro™ MR16
Underwater Light
(Optional Glare Guards)*



*MarinerPro LED
Underwater Lights (Set of 3)*

Optional Glare Guards Available. AMP ONE Integrated, Constant Output Integrated, and Lamp-Ready Models Available

SOLAR

Solar-powered light fixtures have provided homeowners with illumination at virtually no costs with little-to-no effort needed for installation. While the convenience is unmatched in the industry, the overall quality of the lighting fixtures has left much to be desired; until now that is.



Solarium Solar Spotlight Benefits

1. Brightest solar spotlight on the market.
2. Long-lasting. Powers on at dusk at 200 lumens (lasts for several hours), then gradually dims throughout the night and powers off.
3. Multiple toothed knuckles and a ball gimbal joint allow for easy adjustment, aiming of light, and maximum sun exposure.

Solarium Solar Spotlight

BUILT-IN HUB SYSTEM

This system will revolutionize the way that landscape lighting is installed. Turning fixtures into connection hubs means that installation is faster, easier, and mess-free. This system includes fixtures that have the Built-In Hub pre-installed as well as bases that allow you to turn any brass ½" NPSM threaded fixture into a Built-In Hub System fixture.

Built-In Hub System Features & Benefits

1. Mess-free, above ground connections for easy troubleshooting & maintenance.
2. Built-in, clamp-connect terminals for easy installation.
3. Solid cast brass construction – Lifetime Warranty included.
4. UL & cUL listed.
5. Patent pending.



*VariantPro
with Built-In Hub*

*Path Light Stem
with Built-In Hub + Hat Options*



ConexPro



TerrainPro



EllipsePro



DynastyPro 5"



DynastyPro 7"



MarqueePro

120V FIXTURES

Line voltage fixtures are designed for professional installers and are primarily used in commercial, security, and public-use applications. 120V requires an electrician for installation.



PilotPro



*Max PinnaclePro120V
LED Spotlight*



*Roman
Estate Path*



StetsonPro 12"



*Grecian
Estate Path*



*Byzantine
Estate Path*

TRANSFORMERS

Low voltage landscape lighting transformers are designed for easy installation, consistent performance, and enduring longevity. They work for all types of low voltage outdoor lighting.



AMP® Slim Line and Clamp-Connect Series

These transformers are specifically designed for LED systems and feature the exceptional clamp-type terminal blocks for fast and secure connections. These transformers are limited to 12V and 15V taps since LED systems accommodate a wide range of acceptable voltage.

AMP® Multi-Tap Series Transformers

These transformers feature 12V, 13V, 14V, and 15V voltage taps.

AMP® PRO Series

These transformers feature voltage taps from 12V through 22V.

AMP® Dual Circuit Transformer

This transformer has two timer and photocell slots to run two independently controlled landscape lighting systems from one unit. Ideal for homes and properties that have multiple lighting zones or security lighting.



150W Slim Line
Transformer



300W Clamp-Connect
Transformer



900W 12-22V Multi-Tap Pro
Transformer



600W (2 x 300W)
Dual Circuit Transformer

CONNECTORS & HUBS

Connectors are crucial to the integrity of any landscape lighting system. We carry a wide variety of high-quality connectors and hubs that will suit any project's demands.



PRO JUNCTION HUB

AMP® Clamp-Connect Series

This series uses clamp-type connectors for simple, fast, and secure connections.

Best for System Maintenance

Without the use of silicone sealant, this hub allows you to access your landscape lighting connections long after installation. This also allows for easy addition and removal of fixtures after installation.

AMP® Innovation Series

This hub is a AMP® innovation and is patent pending.



PRO JUNCTION DIRECT BURIAL CONNECTORS

These connectors feature clamp-connect technology for simple, fast, and secure connections. They have reservoirs that are pre-filled with waterproof silicone grease. These connectors are AMP® innovations and are patent pending.

AMP® Pro Nano-Junction 3-Way

Connects up to 3 leads per unit; or 2 fixtures and 1 home run.

AMP® Pro Micro-Junction 5-Way

Connects up to 5 leads per unit; or 4 fixtures and 1 home run.

AMP® Pro Macro-Junction 8-Way

Connects up to 8 leads per unit; or 7 fixtures and 1 home run.



DryConn
Black & Grey
Black & Blue



Blazing DBR
Splice Connectors



DryConn
DBR/Y-600 with
Copper Crimps

LED BULBS

We offer a variety of LED bulbs specifically designed for outdoor, low voltage lighting. Our LED bulbs use the latest technology, are available at factory-direct pricing, and carry a lifetime warranty.



12V SINGLE SOURCE LED MR11 BULBS

Fully encapsulated to keep moisture away from the LED. Single source LEDs produce crisper shadows and provide professional results. UL & cUL listed.



12V SINGLE SOURCE LED MR16 BULBS

Fully encapsulated to keep moisture away from the LED. Single source LEDs produce crisper shadows and provide professional results. UL & cUL listed.



12V LED PAR36 BULBS

Direct replacements for halogen PAR36 bulbs with similar light levels, using only a fraction of the power consumption. Fully encapsulated, stainless steel hardware, and IP rating of 67, making these the perfect LEDs for outdoor use.



12V LED G4 BI-PIN BULBS

Fully encapsulated to keep moisture away from the LED. Slots on the capsule help draw heat away from the lamp to increase its lifespan. Specifically designed for landscape lighting and outdoor, low-voltage lighting.



12V LED SCB BULBS

(Single Contact Bayonet Base) Omnidirectional LED bulbs fully enclosed in a semi-opaque capsule. These bulbs deliver an evenly dispersed, soft edged illumination.



120V GU8 BI-PIN BULB

Specifically designed for line voltage (120V) outdoor landscape lighting. Fully encapsulated to keep moisture away from LED.



T5 WEDGE BULB

Fully encapsulated to keep moisture away from the LED and are specifically designed for outdoor, low voltage (12V) lighting.